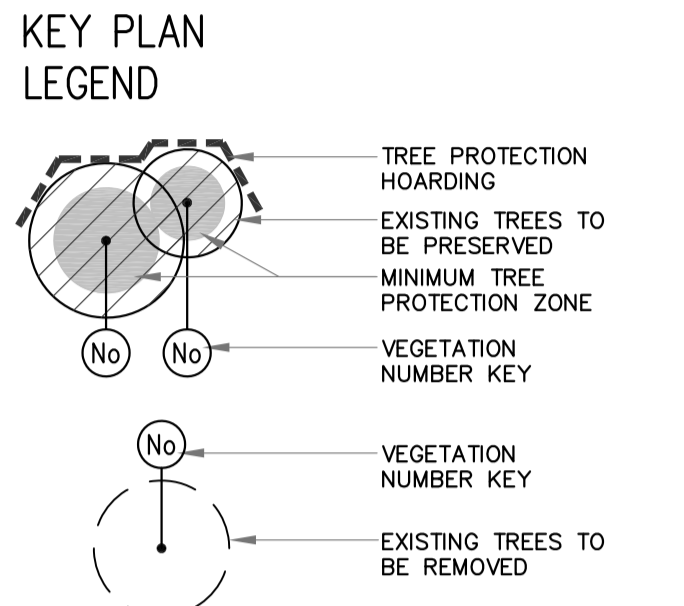
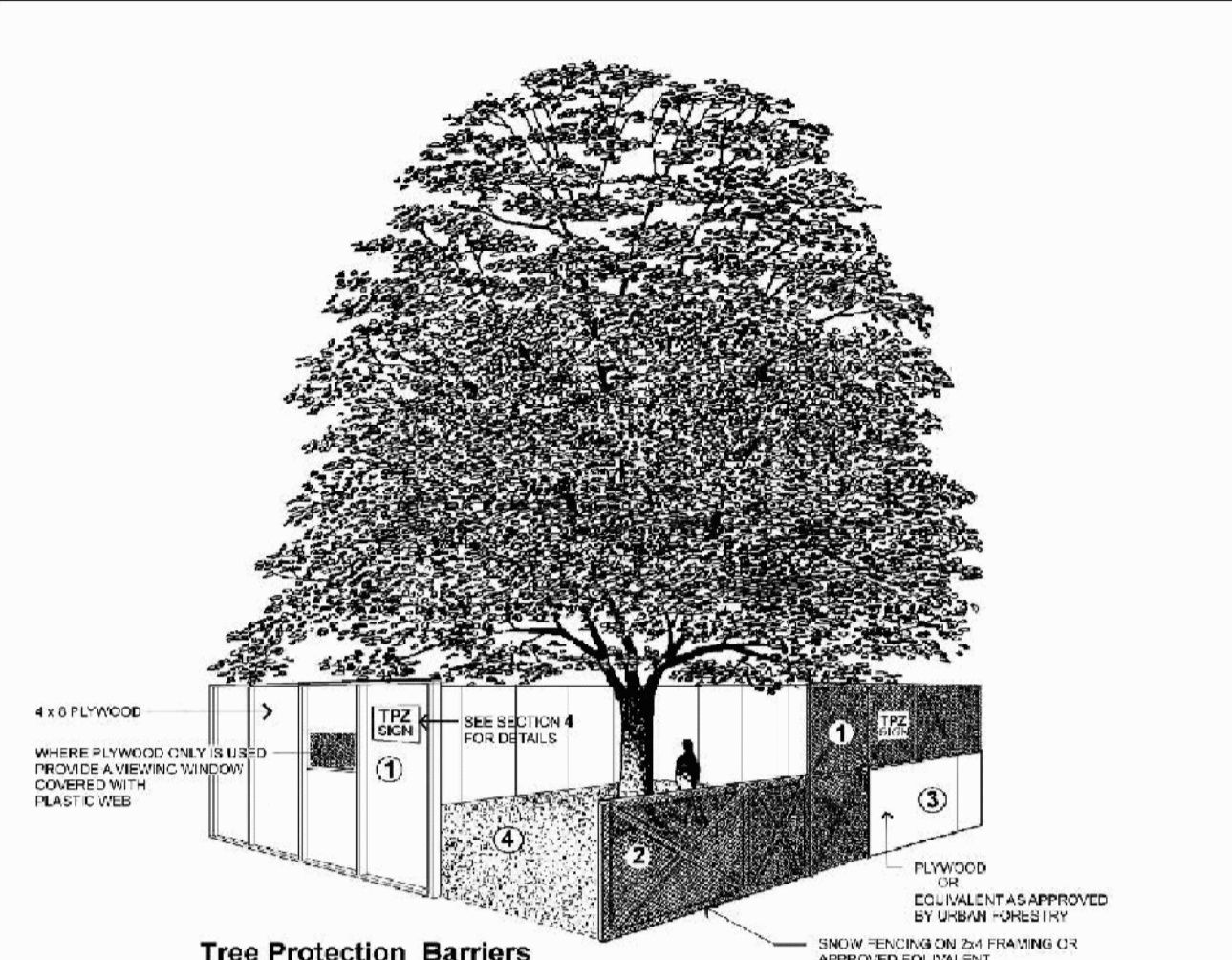


TREE CATEGORIES	
1	Trees with diameters of 30cm or more, situated on private property, on the subject site.
2	Trees with diameters of 30cm or more, situated on private property, within 6m of the subject site.
3	Trees of all diameters situated on City owned parkland within 6m of the subject site.
4	Trees of all diameters situated within lands designated under City of Toronto Municipal Code, Chapter 658.
5	Trees of all diameters situated within the City road allowance adjacent to the subject site.
Exempt	Trees that are less than 30cm diameter and located on private property.

GENERAL NOTES
 VERIFY ALL DIMENSIONS. DO NOT SCALE DRAWINGS.
 REPORT ANY DISCREPANCIES, DISCOVERED ERRORS, OR OMISSIONS TO THE LANDSCAPE ARCHITECT BEFORE PROCEEDING.
 IT IS ADVISED THAT CONTRACTORS CONTACT THE LANDSCAPE ARCHITECT PRIOR TO CONSTRUCTION TO ENSURE THE USE OF THE LATEST REVISED DRAWINGS.
 DRAWINGS AND SPECIFICATIONS ARE THE PROPERTY OF THE LANDSCAPE ARCHITECT.



KEY	SPECIES	GALFIPER IN (cm)	CROWN IN (m)	HEALTH	Q/R/P	COMMENTS	PRESERVATION	MIN. TPZ	TREE CATEGORY	KEY
1	FREEMAN MAPLE	6.0	2.5	GOOD		RECENTLY PLANTED STREET TREE.	REMOVE	1.2	5	1
2	FREEMAN MAPLE	6.0	2.5	GOOD		RECENTLY PLANTED STREET TREE.	PRESERVE	1.2	5	2
3	LINDEN	8.0	2.5	GOOD		RECENTLY PLANTED STREET TREE.	PRESERVE	1.2	5	3
4	FREEMAN MAPLE	6.0	2.5	GOOD		RECENTLY PLANTED STREET TREE.	PRESERVE	1.2	5	4
6	FREEMAN MAPLE	7.0	2.5	GOOD		RECENTLY PLANTED STREET TREE.	PRESERVE	1.2	5	6
7	FREEMAN MAPLE	6.0	2.5	GOOD		RECENTLY PLANTED STREET TREE.	REMOVE	1.2	5	7
8	FREEMAN MAPLE	6.0	2.5	GOOD		RECENTLY PLANTED STREET TREE.	REMOVE	1.2	5	8
9	FREEMAN MAPLE	7.0	2.5	GOOD		RECENTLY PLANTED STREET TREE.	PRESERVE	1.2	5	9
10	FREEMAN MAPLE	6.0	2.5	GOOD		RECENTLY PLANTED STREET TREE.	PRESERVE	1.2	5	10
11	LINDEN	7.0	2.5	FAIR		RECENTLY PLANTED STREET TREE, NARROW FORM.	PRESERVE	1.2	5	11
12	FREEMAN MAPLE	7.0	2.5	FAIR		RECENTLY PLANTED STREET TREE.	PRESERVE	1.2	5	12
13	FREEMAN MAPLE	6.0	2.0	FAIR		RECENTLY PLANTED STREET TREE, SPARSE.	PRESERVE	1.2	5	13
14	FREEMAN MAPLE	7.0	3.0	GOOD		RECENTLY PLANTED STREET TREE.	PRESERVE	1.2	5	14
16	FREEMAN MAPLE	7.0	3.0	GOOD		RECENTLY PLANTED STREET TREE.	PRESERVE	1.2	5	16
17	FREEMAN MAPLE	6.0	3.0	GOOD		RECENTLY PLANTED STREET TREE.	PRESERVE	1.2	5	17
18	HONEY LOCUST	32.0	8.0	FAIR		MAJOR HEALED SPLIT IN TRUNK.	PRESERVE	2.4	5	18
19	HONEY LOCUST	32.0	10.0	GOOD		GOOD FORM.	PRESERVE	2.4	5	19
20	WHITE SPRUCE	33.0	5.0	POOR		VERY SPARSE, DECLINING, LEADER DEAD.	PRESERVE	2.4	5	20
31	AUSTRIAN PINE	41.0	7.5	GOOD		FULL FORM, CODOMINANT LEADERS.	PRESERVE	3	2	31
32	WILLOW	20.0	5.0	GOOD		CLUMP, LOW BRANCHING.	PRESERVE	1.8	EXEMPT	32
23	HONEY LOCUST	5	2.5	GOOD		RECENTLY PLANTED SITE PLAN LANDSCAPE TREE.	PRESERVE	1.2	5	23
24	HONEY LOCUST	5	2.5	GOOD		RECENTLY PLANTED SITE PLAN LANDSCAPE TREE.	PRESERVE	1.2	5	24
25	RED MAPLE	5	2.5	GOOD		RECENTLY PLANTED SITE PLAN LANDSCAPE TREE.	PRESERVE	1.2	5	25
26	RED MAPLE	5	2.5	GOOD		RECENTLY PLANTED SITE PLAN LANDSCAPE TREE.	PRESERVE	1.2	5	26
27	LONDON PLANE TREE	5	2.5	GOOD		RECENTLY PLANTED SITE PLAN LANDSCAPE TREE.	PRESERVE	1.2	EXEMPT	27
28	LONDON PLANE TREE	5	2.5	GOOD		RECENTLY PLANTED SITE PLAN LANDSCAPE TREE.	PRESERVE	1.2	EXEMPT	28
29	LONDON PLANE TREE	5	2.5	GOOD		RECENTLY PLANTED SITE PLAN LANDSCAPE TREE.	PRESERVE	1.2	EXEMPT	29
30	LONDON PLANE TREE	5	2.5	GOOD		RECENTLY PLANTED SITE PLAN LANDSCAPE TREE.	PRESERVE	1.2	EXEMPT	30
31	KENTUCKY COFFEE TREE	5	2.5	GOOD		RECENTLY PLANTED SITE PLAN LANDSCAPE TREE.	REMOVE	1.2	EXEMPT	31
32	KENTUCKY COFFEE TREE	5	2.5	GOOD		RECENTLY PLANTED SITE PLAN LANDSCAPE TREE.	REMOVE	1.2	EXEMPT	32
33	HONEY LOCUST	5	2.5	GOOD		RECENTLY PLANTED SITE PLAN LANDSCAPE TREE.	REMOVE	1.2	EXEMPT	33
34	HONEY LOCUST	5	2.5	GOOD		RECENTLY PLANTED SITE PLAN LANDSCAPE TREE.	REMOVE	1.2	EXEMPT	34
35	HACKBERRY	5	2.5	GOOD		RECENTLY PLANTED SITE PLAN LANDSCAPE TREE.	REMOVE	1.2	EXEMPT	35
36	HACKBERRY	5	2.5	GOOD		RECENTLY PLANTED SITE PLAN LANDSCAPE TREE.	REMOVE	1.2	EXEMPT	36
37	RED MAPLE	5	2.5	GOOD		RECENTLY PLANTED SITE PLAN LANDSCAPE TREE.	REMOVE	1.2	EXEMPT	37
38	RED MAPLE	5	2.5	GOOD		RECENTLY PLANTED SITE PLAN LANDSCAPE TREE.	REMOVE	1.2	EXEMPT	38
39	RED MAPLE	5	2.5	GOOD		RECENTLY PLANTED SITE PLAN LANDSCAPE TREE.	REMOVE	1.2	EXEMPT	39
40	HONEY LOCUST	5	2.5	GOOD		RECENTLY PLANTED SITE PLAN LANDSCAPE TREE.	REMOVE	1.2	EXEMPT	40
41	HONEY LOCUST	5	2.5	GOOD		RECENTLY PLANTED SITE PLAN LANDSCAPE TREE.	REMOVE	1.2	EXEMPT	41
42	HACKBERRY	5	2.5	GOOD		RECENTLY PLANTED SITE PLAN LANDSCAPE TREE.	REMOVE	1.2	EXEMPT	42
43	HACKBERRY	5	2.5	GOOD		RECENTLY PLANTED SITE PLAN LANDSCAPE TREE.	REMOVE	1.2	EXEMPT	43
44	HACKBERRY	5	2.5	GOOD		RECENTLY PLANTED SITE PLAN LANDSCAPE TREE.	REMOVE	1.2	EXEMPT	44
45	HONEY LOCUST	5	2.5	GOOD		RECENTLY PLANTED SITE PLAN LANDSCAPE TREE.	REMOVE	1.2	EXEMPT	45



- Tree Protection Barriers**
- Tree protection barriers must be constructed with a solid wood frame clad with plywood or approved equivalent. Height of hoarding may be less than 8 ft to accommodate any branches that may be lower.
 - Tree protection barriers for trees situated on the City road allowance where visibility must be maintained can be 1.2m (4ft) high and consist of orange plastic web snow fencing on a wood frame made of 2 x 4s.
 - Where some excavate or fill has to be temporarily located near a tree protection barrier, plywood must be used to ensure no material enters the Tree Protection Zone.
 - No construction activity, grade changes, surface treatment or excavations of any kind is permitted within the Tree Protection Zone.
- Notes:**
 Sediment control fencing shall be installed in locations indicated in an Urban Forestry approved Tree Protection Plan. The sediment control fencing must be installed to Ontario Provincial Standards (OPSD-219.119) heavy duty silt fence barrier and to the satisfaction of Urban Forestry. See Detail TP-2.

3 CITY OF TORONTO TREE PROTECTION HOARDING

The following notes are to be provided on all site and landscape plans submitted in support of construction related applications.

Prior to site disturbance the owner must confirm that no migratory birds are making use of the site for nesting. The owner must ensure that the works are in conformance with the Migratory Bird Convention Act and that no migratory bird nests will be impacted by the proposed work.

It is the applicant's responsibility to discuss potential tree injury of trees on shared property lines with their neighbours. Should such trees be injured to the point of instability or death the applicant may be held responsible for removal and such issues would be dealt with in civil court or through negotiation. The applicant would be required to replace such trees to the satisfaction of Urban Forestry.

TREE PROTECTION ZONE:
 No construction activity including grade changes, surface treatments or excavations of any kind is permitted within the area identified on the Tree Protection Plan or Site Plan as a Tree Protection Zone (TPZ). No root cutting is permitted. No storage of materials or fill is permitted within the TPZ. No movement or storage of vehicles or equipment is permitted within the TPZ. The area(s) identified as a TPZ must remain undisturbed at all times.

TREE PROTECTION BARRIERS:
For City-owned Trees:
 Tree protection barriers for trees situated on the City road allowance where visibility must be maintained, can be 1.2m (4ft) high and consist of chain link, or orange plastic web snow fencing on a 2 x 4 wood frame. All supports and bracing used to secure the barrier should be located outside the TPZ. All supports and bracing should minimize damage to roots outside the TPZ. Where some fill or excavate has to be temporarily located near a tree protection barrier, plywood must be used to ensure no material enters the TPZ.

If the TPZ needs to be reduced to facilitate construction access, the tree protection barrier must be maintained at a lesser distance and the exposed TPZ protected with plywood and wood chips. This must first be approved by Urban Forestry.

For trees on private property situated on or adjacent to construction sites:
 Tree protection barriers must be installed around trees to be protected using plywood clad hoarding or an equivalent approved by Urban Forestry. All supports and bracing to securely secure the barrier should be outside the TPZ. All such supports and bracing should minimize damage to roots outside the TPZ.

1 TREE PROTECTION NOTES AND SIGNAGE

Tree Protection Hoarding in the Ravine & Natural Feature Protected Areas
 The applicant/owner shall protect all trees in the protected areas that have not been approved for removal or injury throughout development works to the satisfaction of Urban Forestry.

Plywood for chain link fence, if agreed to by Urban Forestry tree protection hoarding shall be installed in the locations as indicated in the Urban Forestry approved tree protection plan. Tree protection hoarding shall be installed to standards as detailed in the City's Tree Protection Policy and Specifications for Construction near Trees and to the satisfaction of Urban Forestry.

Tree protection hoarding must remain in place and in good condition during demolition and/or construction and must not be altered or moved until authorized by Urban Forestry. Established tree protection zones must not be used as construction access, storage or staging areas. Grade changes are not permitted within established TPZ.

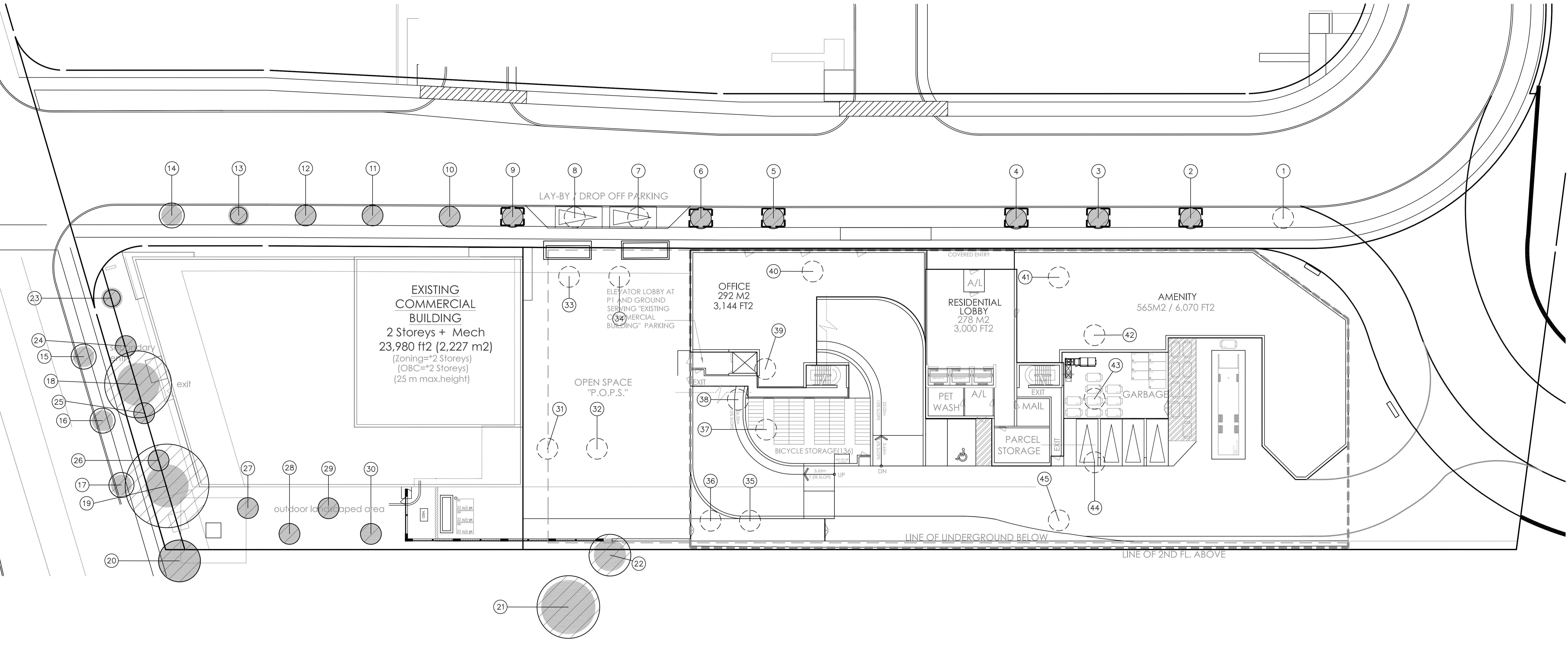
All additional tree protection or preservation requirements above and beyond the required tree protection hoarding, must be undertaken or implemented as detailed in the Urban Forestry approved arborist report and/or the approved tree protection plan and to the satisfaction of Urban Forestry.

Sediment control fencing shall be installed in the locations as indicated in the Urban Forestry approved sediment control plan. The sediment control fencing must be installed to Ontario Provincial Standards (OPSD-219.119) and to the satisfaction of Urban Forestry.

General Note:
 Prior to the commencement of any site activity the tree protection barriers specified on this plan must be installed and written notice provided to Urban Forestry. The tree protection barriers must remain in effective condition until all site activities including landscaping are complete. Where required, signs as specified in Section 4 "Tree Protection Signage" must be affixed to all sides of the barrier. Written notice must be provided to Urban Forestry prior to the removal of the tree protection barriers.

ARBORICULTURAL WORK:
 Any roots or branches which extend beyond the TPZ indicated on this plan which require pruning, must be pruned by a qualified Arborist or other tree professional as approved by Urban Forestry. All pruning of tree roots and branches must be in accordance with good arboricultural standards. Roots located outside the TPZ that have received approval from Urban Forestry to be pruned must first be exposed by hand digging or by using a low pressure hydro vac method. This will allow a proper pruning cut and minimize tearing of the roots. The Arborist/professional retained to carry out crown or root pruning must contact Urban Forestry no less than 48 hours prior to conducting any specified work.

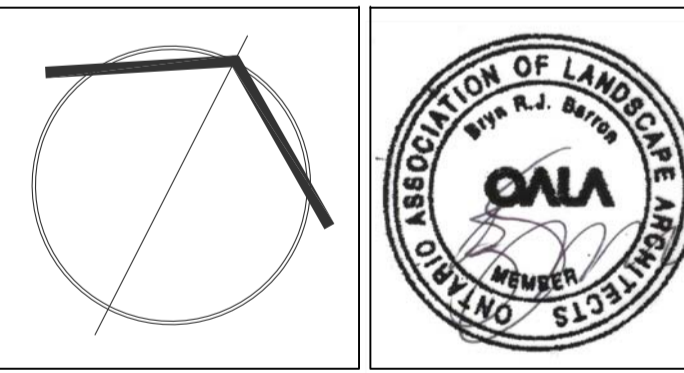
2 CITY OF TORONTO TREE PROTECTION HOARDING



Matthew C. Geffes
MATTHEW C. GEFFES
 International Society of Arboriculture
 Certified Arborist #0N-1144
 Date: APRIL 2020

No.	DATE	REVISION	BY
2	APRIL 2020	ISSUED FOR SUBMISSION	BB
1	2020-01-21	ISSUED FOR REZONING	BB

It is the responsibility of the Contractor and/or Owner to ensure that the drawings with the latest revisions are used for construction.



SBK 5770 HURONTARIO STREET, SUITE 320
 MISSISSAUGA, ONTARIO, L4R 3G2
 T: 416.695.4949 F: 905.712.3101
 WWW.STRYBOS.COM

STRYBOS BARRON KING
 LANDSCAPE ARCHITECTURE

PROJECT:
PROPOSED MIXED-USE DEVELOPMENT
 (PURPOSE BUILT RENTAL & OFFICE HERON'S HILL WAY)
 HERON'S HILL WAY & SHEPPARD AVE. E.
 NORTH YORK, ONTARIO

DRAWING TITLE:
EXISTING TREE INVENTORY AND PRESERVATION PLAN

SCALE: 1 : 300	PROJECT No. 19-5411
DATE: DECEMBER 2019	DRAWING No. V100
DRAWN BY: SS	CHECKED BY: DM